



124 Pagitt Street, Chatham, ME4 6RB

Offers Over £300,000

***** OPEN HOUSE SATURDAY 14th MAY 12pm-2pm CALL TO BOOK YOUR SLOT ASAP *****

*** THREE BEDROOM HOUSE * NO ONWARD CHAIN * OFF ROAD PARKING TO FRONT *
GENEROUS REAR GARDEN * EASY ACCESS TO TOWN AND MAIN LINE STATION.**

Move straight into this three bedroom home situated on the borders of Chatham and Rochester, an ideal family home with the huge benefit of off road parking to the front.

This fine home is presented in good decorative order throughout and ideal as a first buy or family home, accommodation comprises.

Entrance door to hallway stairs to first floor doors to lounge dining room and kitchen

Lounge 12'11 x 12'9 (3.94m x 3.89m)

Dining Room 12'11 x 9' (3.94m x 2.74m)

Kitchen 9'8 x 7'1 (2.95m x 2.16m)

Bedroom One 13'6 x 9'4 (4.11m x 2.84m)

Bedroom Two 11'4 x 9'3 (3.45m x 2.82m)

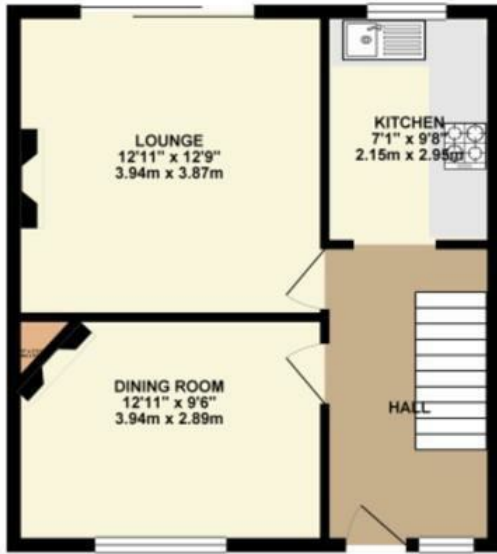
Bedroom Three 9'6 x 8'8 (2.90m x 2.64m)

Garden

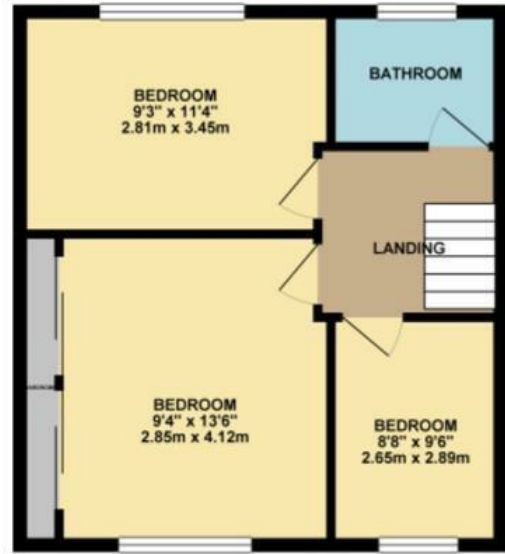
Parking

Floor Plan

GROUND FLOOR 443.26 sq. ft.
(41.18 sq. m.)



1ST FLOOR 443.26 sq. ft.
(41.18 sq. m.)



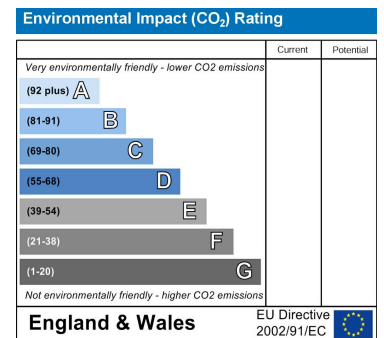
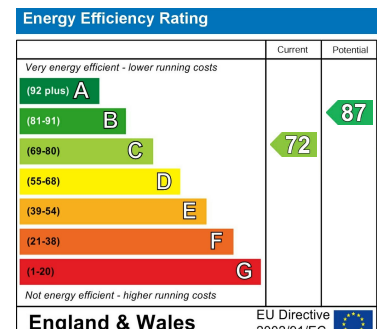
TOTAL FLOOR AREA : 886.53 sq. ft. (82.36 sq. m.) approx.

Whilst every attempt has been made to ensure the accuracy of the description contained here, measurements of doors, windows, rooms and any other items are approximate and no responsibility is taken for any error, omission or mis-statement. This plan is for illustrative purposes only and should be used as such by any prospective purchaser. The services, systems and appliances shown have not been tested and no guarantee as to their operability or efficiency can be given.
Made with Metropix ©2022

Area Map



Energy Efficiency Graph



These particulars, whilst believed to be accurate are set out as a general outline only for guidance and do not constitute any part of an offer or contract. Intending purchasers should not rely on them as statements of representation of fact, but must satisfy themselves by inspection or otherwise as to their accuracy. No person in this firm's employment has the authority to make or give any representation or warranty in respect of the property.